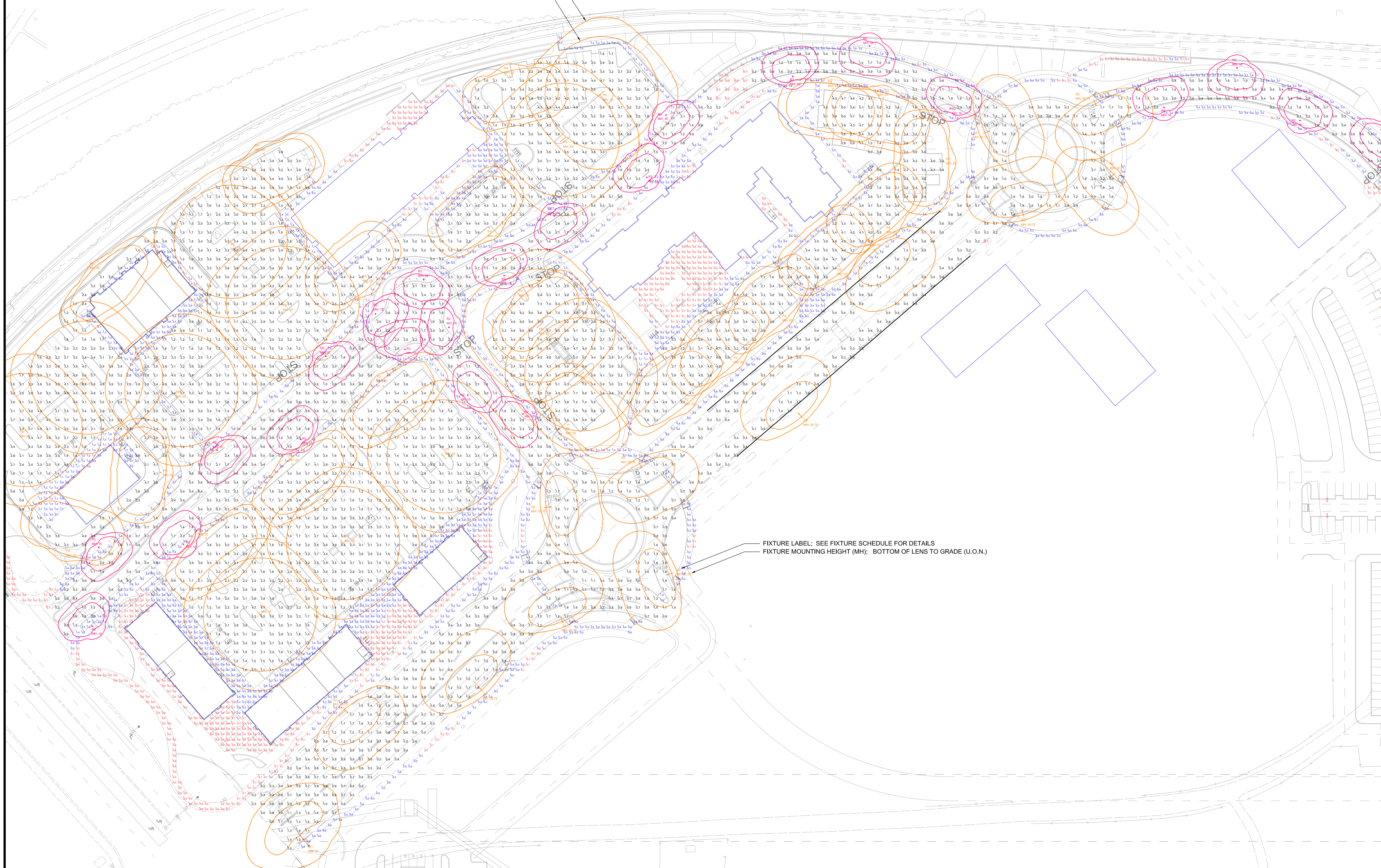


Calculation Summary						
Scene: OVERALL						
Label	CalcType	Units	Avg	Max	Min	Avg/Min Max/Min
WALKWAY	Illuminance	Fc	0.64	7.7	0.0	N.A. N.A.
PARKING	Illuminance	Fc	2.10	11.0	0.0	N.A. N.A.

Luminaire Schedule							
Scene: OVERALL							
Symbol	Qty	Label	Arrangement	Description	Lum. Lumens	LLF	Filename
□	1	(E)	SINGLE	LEOTEK GC1-80F-MV-NW-3-xx-530	14083	0.850	GC1-80F-MV-NW-3-GY-530 L11132202
□	1	P1	SINGLE	GARDCCO P21-A1-1-2-200LA-NW-UNV	18514	0.850	P21-2-200LA-NW.ies
□	6	P2	SINGLE	GARDCCO P21-A1-1-3-200LA-NW-UNV	18524	0.850	P21-3-200LA-NW.ies
□	13	P4	SINGLE	GARDCCO P21-A1-1-4-200LA-NW-UNV	18348	0.850	P21-4-200LA-NW.ies
□	12	P5	2 @ 180 DEG (GARDCCO P21-A1-2-5W-200LA-NW-UNV	22079	0.850	P21-5W-200LA-NW.ies
○	23	R2	SINGLE	LUMEC MPTR-55V32LED4K-T-LE4	4549	0.850	MPTR-55V32LED4K-T-LE4 (S140602)2m
□	12	S2	SINGLE	LUMEC RFM-108W48LED4K-T-R3S	12140	0.850	RFM-108W48LED4K-T-R3S (S141016)3



Associated Lighting Representatives
 7300 FOLSOM BOULEVARD, SUITE 201
 SACRAMENTO, CA 95826
 PH: 916 363-6600 FAX: 916 363-6600
 www.allrcc.com

Associated Network Systems Representatives

Calculations have been performed according to IES standards and good practice. Some differences between measured and calculated results may occur due to measurement techniques and field conditions such as voltage and temperature variations, fixture and architectural elements significantly affect the lighting calculations. If the real environment conditions do not match the input data, differences will occur between measured values and calculated values.

AG32 VERSION 2.32
 ASI (C) 2005 CHATFIELD AVENUE, SUITE 100, LITTLETON, CO 80127

PHOTOMETRIC DATA USED AS INPUT FOR THESE CALCULATIONS IS BASED ON ESTABLISHED PROCEDURES AND PUBLISHED LAMP RATINGS. FIELD PERFORMANCE WILL DEPEND ON ACTUAL LAMP, LUMINAIRE, AND SITE CHARACTERISTICS.

REPORT FOR:
 STEVE FUHRMAN
 FUHRMAN LEAVY LAND GROUP

DATE REPRESENTATIVE:
 PATRICK ROBITALLE
 ASSOCIATED LIGHTING REPRESENTATIVES

APPLICATION/ENGINEER:
 GREG KESSLER

PROJECT DESCRIPTION:
 HR Parcel 49

SCALE:
 E-100

DATE:
 1/4/18

SHEET:
 1 OF 1

AS NOTED

Please note that the light loss factor (LLF) used in calculations is based on published mean lumen ratings by the major lamp manufacturers: 0.75 LLF for pulse start metal halide; 0.80 LLF for high pressure sodium and induction lamps; 0.85 LLF for fluorescent and LED sources; 0.90 LLF for Cosmo and Elite lamps.

PRELIMINARY NOT FOR CONSTRUCTION

PROJECT PLAN LIGHTING LAYOUT - PHOTOMETRIC ANALYSIS
 SCALE: 1" = 40'-0" (ALL VALUES SHOWN ARE MAINTAINED HORIZONTAL FOOTCANDLES AT GRADE, U.O.N.)

FIXTURE LABEL; SEE FIXTURE SCHEDULE FOR DETAILS
 FIXTURE MOUNTING HEIGHT (MH); BOTTOM OF LENS TO GRADE (U.O.N.)